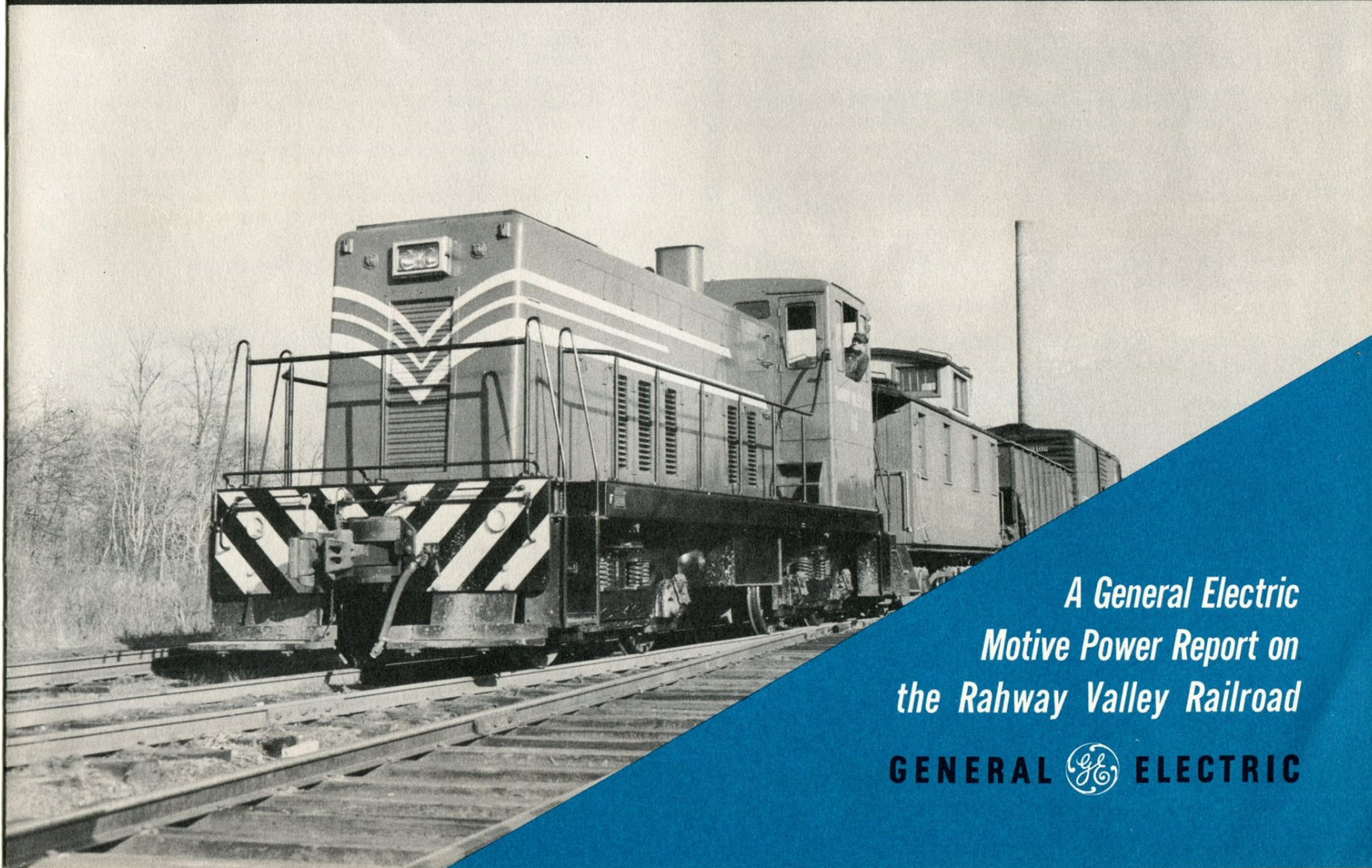


# ***Modern Motive Power in Action***



*A General Electric  
Motive Power Report on  
the Rahway Valley Railroad*

**GENERAL  ELECTRIC**



# "...ready to go in 5 minutes...that's

## WHAT IS MODERN MOTIVE POWER?

Modern Motive Power is more than just new locomotives. It is motive power and product services that are carefully matched with operating requirements . . . a combination that returns the full value on investment in terms of haulage capacity, availability, and low cost, reliable, performance.

This report describes what happened when the Rahway Valley Railroad applied this concept of Modern Motive Power to its operations. You will find details on the back cover as to how you can obtain similar results with Modern Motive Power on your railroad.

"Modern Motive Power by General Electric is the best investment we ever made. It's made a big difference in the operation of our railroad.

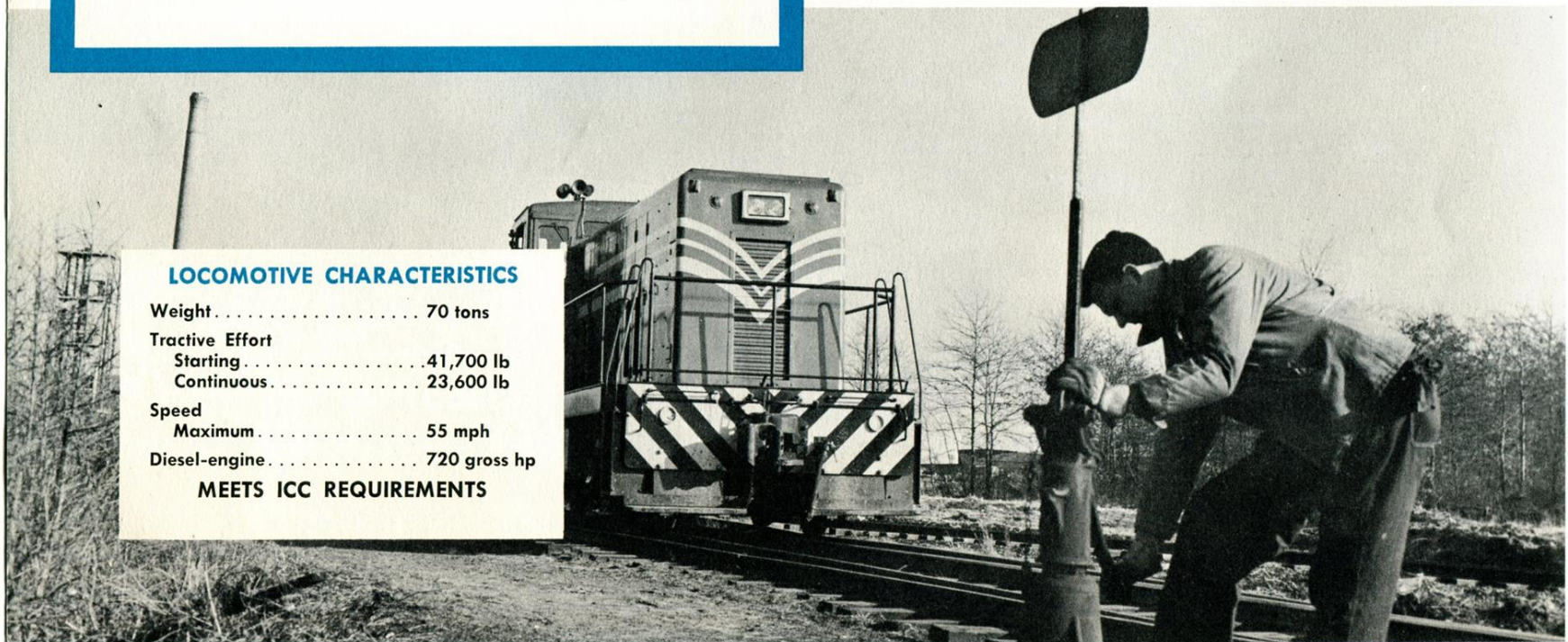
"What has it meant to us? For one thing, it means that our G-E diesel-electric locomotives are ready to go in just five minutes. It sometimes took five to six hours to get our old locomotives in operation. Every railroad man knows the importance of quick starts and ready availability.

"Another thing that Modern Motive Power means to us is big fuel savings. Our locomotives are paying for themselves in fuel savings alone. Fuel costs for our former equipment ran as high as \$82.25 a day. Fuel for our two G-E 70-tonners costs just \$7.61 a day!

### LOCOMOTIVE CHARACTERISTICS

Weight . . . . .	70 tons
Tractive Effort	
Starting . . . . .	41,700 lb
Continuous . . . . .	23,600 lb
Speed	
Maximum . . . . .	55 mph
Diesel-engine . . . . .	720 gross hp

**MEETS ICC REQUIREMENTS**





# what Modern Motive Power means to us!"

"Reduced maintenance is another important feature of our present system. Locomotive maintenance which used to involve a major factory overhaul every 4 years can now be handled in our own shops and is needed only once in five years.

"All this plus the fact that we now have no costly derailments, and no brush fires along our right-of-way, means that we offer our customers faster, better service.

"From what I've said, you can easily see that we're sold on our G-E Modern Motive Power."


G. A. Clark  
President  
Rahway Valley Railroad

## about the Rahway Valley Railroad . . . .

Operating on 12 lines of mainline track, between Aldene and Maplewood, N.J., the Rahway Valley Railroad hauls a million and a half gross-tons annually.

The Rahway Valley Railroad regularly hauls steel, copper, coal, and cement. Its two 70-tonners smoothly negotiate 3% grades hauling 450 ton loads. The most severe curve along the Rahway Valley lines is 16°.

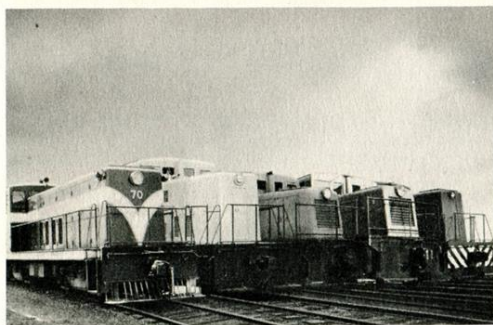
In 1951 the Rahway Valley Railroad started its modernization program with the installation of a 70-tonner. Their most recent addition was another 70-tonner put in service in 1954. Since the switch to Modern Motive Power, this short line railroad has increased operating speed to 15 mph and hauling capacity to 38 cars.



**HEAVY MIXED LOADS** are an easy job on the Rahway Valley Railroad since they installed smooth, ready Modern Motive Power. And, great locomotive versatility plus wide visibility range has brought them safe, efficient, regular service.



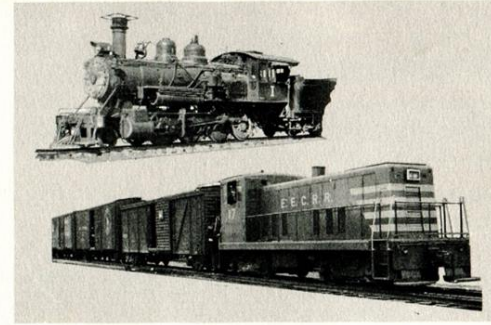
## *A 4-Point Plan to provide your railroad with Modern Motive Power by General Electric*



**1 FIVE STANDARD DIESEL-ELECTRIC LOCOMOTIVES**, ranging from 300 to 720 hp, allow you to select the locomotive that most economically satisfies your operating requirements.



**2 MOTIVE POWER SURVEY** by G-E engineers, at no cost to you, includes a thorough analysis of your railroad to determine your exact locomotive requirements and costs.



**3 FLEXIBLE FINANCING** to help you pay for your Modern Motive Power with the savings that result from replacing your present locomotives.

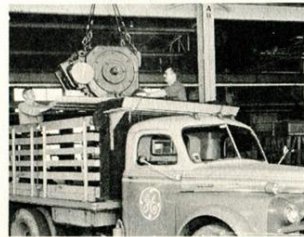
**4 FOUR LOCOMOTIVE SERVICES:** Installation . . . Training . . . Parts . . . Overhaul . . . to assure you of top efficiency and maximum productivity from your Modern Motive Power.



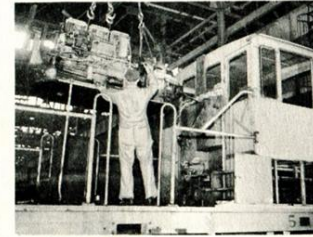
INSTALLATION



TRAINING



PARTS



OVERHAUL

Find out what Modern Motive Power can mean for your railroad by requesting a Motive Power Survey through your nearest G-E Apparatus Sales Office. Or write for the new bulletin "Modern Motive Power For Railroads." Locomotive and Car Equipment Dept., General Electric Co., Erie, Pa.

*Progress Is Our Most Important Product*

**GENERAL  ELECTRIC**